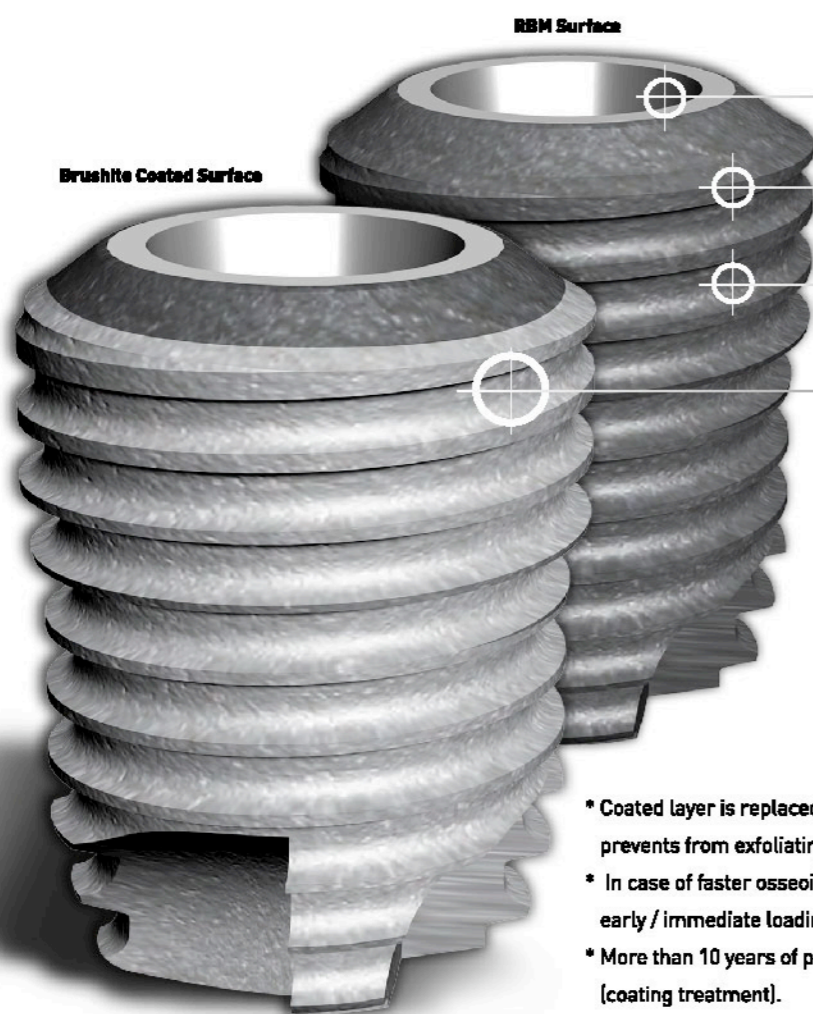
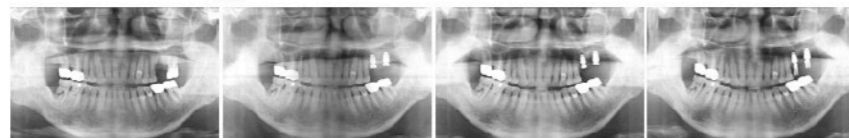


"Standard for the most advanced wide implants"
SM Extra Wide

Immediate loading after extraction / Immediate replacement for failed implants / Faster osseointegration by Brushite coating

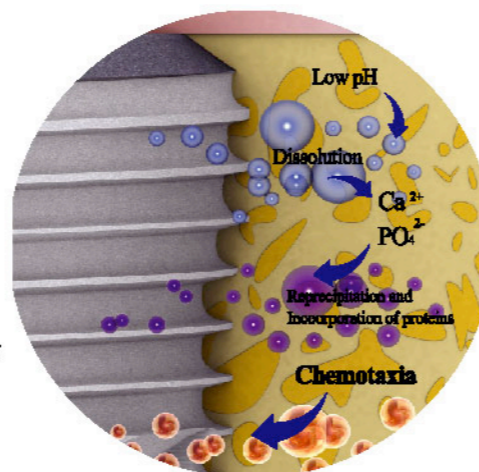


Dual Surface treatment Wide Implant + RBM + Brushite



- Compatible abutment connection with SM implants
- Easy insertion depth adjustment during surgery
- complete threads make deep insertion possible when necessary.
- Immediate loading after extraction
- Threads designed for immediate loading.
- Brushite(CaP) coating facilitates faster osseointegration.

Modus Operandi of Brushite(CaP) coating



- * Coated layer is replaced by new bone, prevents from exfoliating problem.
- * In case of faster osseointegration needs for early / immediate loading.
- * More than 10 years of proven clinical data (coating treatment).
- * Excellent absorption with higher solubility in a biological environment.

"Standard for the most advanced wide implants"
SM Extra Wide



DIO IMPLANT

Headquarters(Factory)
1464 U-dong, Haeundae-gu, Busan, Korea
Tel.+82-51-745-7777 Fax.+82-51-745-7778

Seoul office
Room 1004, Ssangnim B/D, 151-11 Ssangnim-dong,
Jung-gu, Seoul, 100-400, Korea
Tel.+82-2-2268-2850 Fax.+82-2-2275-2850



Overseas Branches

DIO U.S.A
3540 Wilshire Blvd #1104,
Los Angeles, CA 90010
Tel. +1 213 365 2875, Fax. +1 213 365 1595

DIO Australia
Suite 94, 809-811, Pacific Highway Chatswood,
NSW, Sydney, Australia, 2067
Tel. +61 2 9419 4109, Fax. +61 2 9419 6588

DIO Thailand
#5th Rimco bldg, 139 Soi Sukhumvit 63, Mongkol Nua,
Wattana, Bangkok 10110
Tel. +66 2 714 7875, Fax. +66 2 714 7744

DIO China
Beijing Shi Chaoyangqu Wangjing Nanhuayuan
Yinling GuoJi 130 Lou 904-Hao
Tel. +86 10 8687 3787, Fax. +86 10 8472 7846

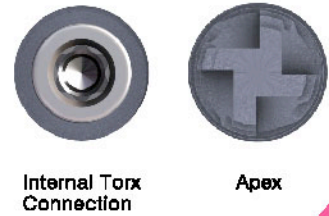
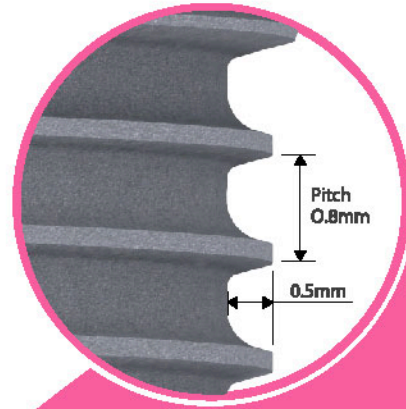
DIO Mexico
Eje Central 805 Col. Portales
C.P.03300 Mexico, D.F.
Tel. +52 55 1843 0690, Fax. +52 55 5539 2729

DIO Vietnam
243-243B Hoang Van Thu St., Tan Binh District,
Ho Chi Minh City, SR Vietnam No.111
Tel. +84 8 997 4878, Fax. +84 8 997 4895

DIO IMPLANT

SM-Extra Wide

- Tapered design**
 Tapered body structure to improve osseointegration and initial stability.
 Threads consists of 0.8mm pitch and 0.5mm height.
- Internal Torx Connection**
 Torx connection is applied for abutment connection to prevent deformation against strong torque.
- Apex**
 Quadruple cutting edges improve self-tapping
- Depth Guide**
 Body threads don't end up incomplete, but the threads go to the end for a better insertion. Insertion depth adjustment is easy.
- No-mount System**
 Mount is unnecessary. Convenient surgery by using fixture driver.
- Restorations Comparability**
 Restorations are compatible with SM implant system.



Site Preparation

Trephine Drill

Drilling a hold in advance with a trephine drill makes surgery more convenient. Collected bone by trephine drill can be used for extraction site cover. Specific trephine drills are available for each implant diameters. Drilling speed at 600-800rpm

***Tips for using a trephine drill.**

After forming a guide line by counterclockwise low speed drilling, drill clockwise to the proper depth for more convenient use.

Final Drill

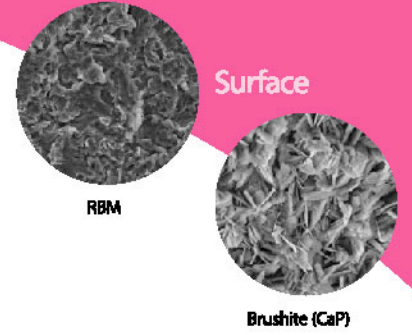
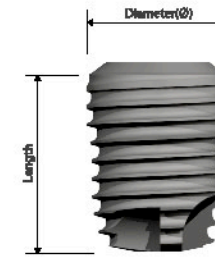
Additional final drilling is needed to expand hole depending on implant sizes.
 5.4 final drill for 5.9 Implant
 5.4 - 5.9 final drill for 6.4 Implant
 5.4 - 5.9 - 6.4 final drill for 6.9 Implant
 Drilling speed at 600-800rpm

Tap Drill

D1 or D2 bone quality can create excessive torque against implant insertion. An extra wide tap drill should be used for tapping.
 5.9 tap drill for 5.9 Implant
 6.4 tap drill for 6.4 Implant
 6.9 tap drill for 6.9 Implant

Implant Insertion

Pick up an implant with a fixture and proceed with implantation. (Use a ratchet wrench if hand insertion is preferred)



Diameter(Ø)	5.9			6.4			6.9			
	Length	6	8	10	6	8	10	6	8	10
RBM										
Brushite (CaP)										



SM Extra Wide Surgical Kit

Straight Drill		Diameter(Ø)			
		4.8			
		Laser Marking	6 / 8 / 10		
			SDS 4810R		
Trephine Drill		Inner Diameter / Outer Diameter(Ø)			
		3.9 / 4.7	4.4 / 5.2	4.9 / 5.7	
		Laser Marking	2 / 4 / 6 / 8 / 10		
			TRD 4739	TRD 5244 TRD 5749	
Final Drill		Diameter(D1/D2)			
		4.5/5.4	5/5.9	5.5/6.4	
		Length	6	8	10
			RTD 5406	RTD 5906	RTD 6406
			RTD 5408	RTD 5908	RTD 6408
			RTD 5410	RTD 5910	RTD 6410
Tap Drill		Diameter(Ø)			
		5.9	6.4	6.9	
		Length	15		
			TPR 5915	TPR 6415 TPR 6915	
Fixture Driver for Ratchet Wrench		Length			
		13	21		
		Type	Short	Long	
			HGW 4813	HGW 4821	
Fixture Driver for Contra Angle		Length			
		21	27		
		Type	Short	Long	
			HGC 4824	HGC 4830	